



1695 Mont-Royal

MONTREAL, QC, H2J 1Z5

Prime retail opportunity
in the heart of Plateau-
Mont-Royal.

UNITED
PROPERTIES

Overview

Located in the heart of the Plateau, on the corner of Mont-Royal East and Papineau, this three-storey mixed-use building is minutes from transportation links, restaurants, and boutiques. The building offers elevator access, and indoor parking.

Property Highlights

- Built in 1980
- Three-stories totalling 11,100 Sq.Ft.
- Excellent visibility
- High pedestrian traffic
- Located near public transit



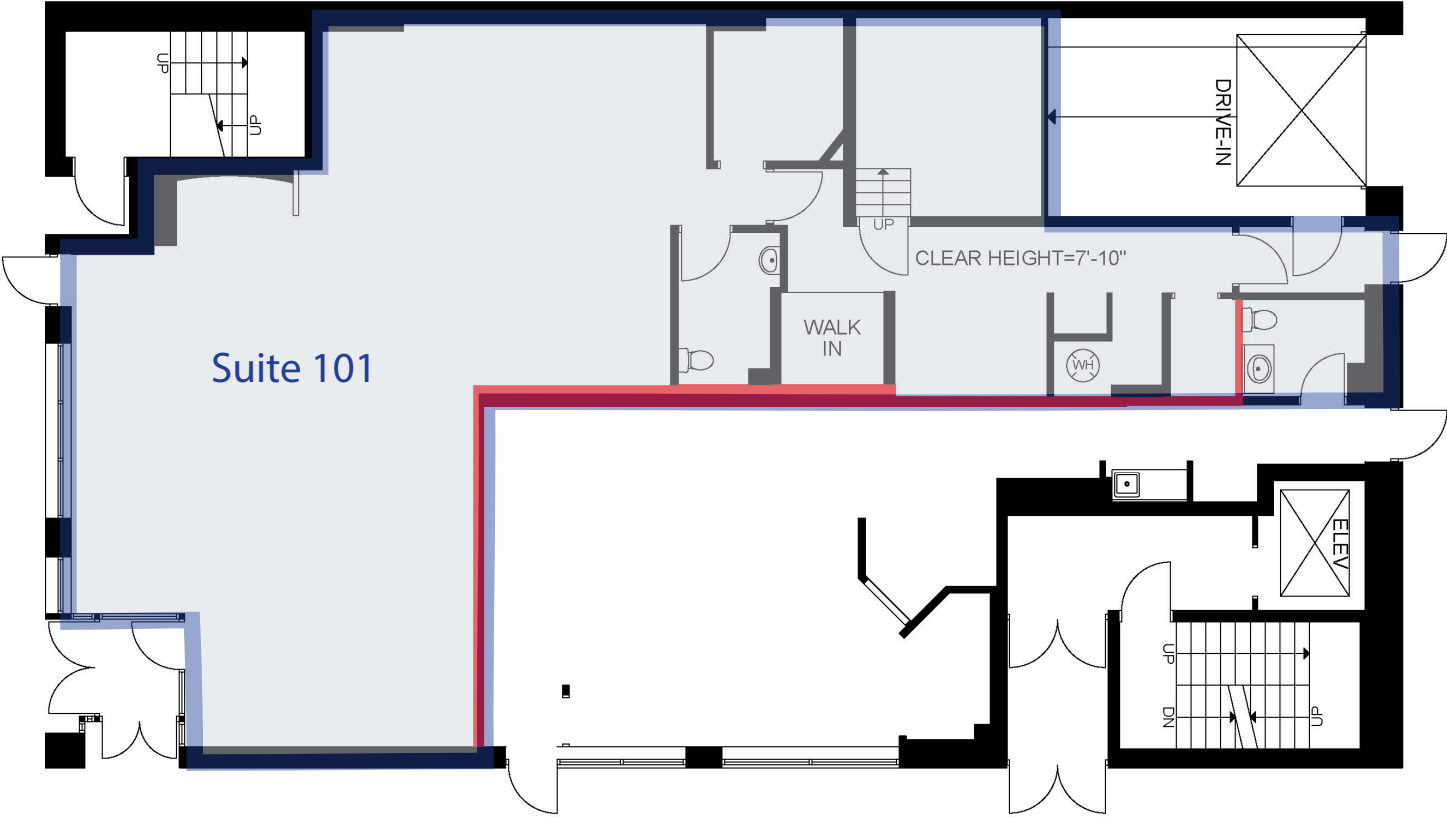
Current Availabilities

| Suite | Area | Available | Type |
|-------|--------------|-----------|--------|
| 101 | 2,175 Sq.Ft. | Immediate | Retail |



Floor Plan - *Ground Floor*

Mont-Royal Avenue



Papineau Avenue

Location and Access



Mont-Royal
8 min

Laurier
11 min



Bus 45, 97, 368
1 min



Bike Score
100

For inquiries:

Jeff Klaiman
Vice President
(514) 843-9999
jklaiman@canadianasset.com

Maxwell Rubin
Vice President
(514) 843-9999
maxwell@canadianasset.com

UNITED PROPERTIES

240 Rue Saint Jacques, Suite 701, Montréal, QC
www.unitedprops.com | info@unitedprops.com